

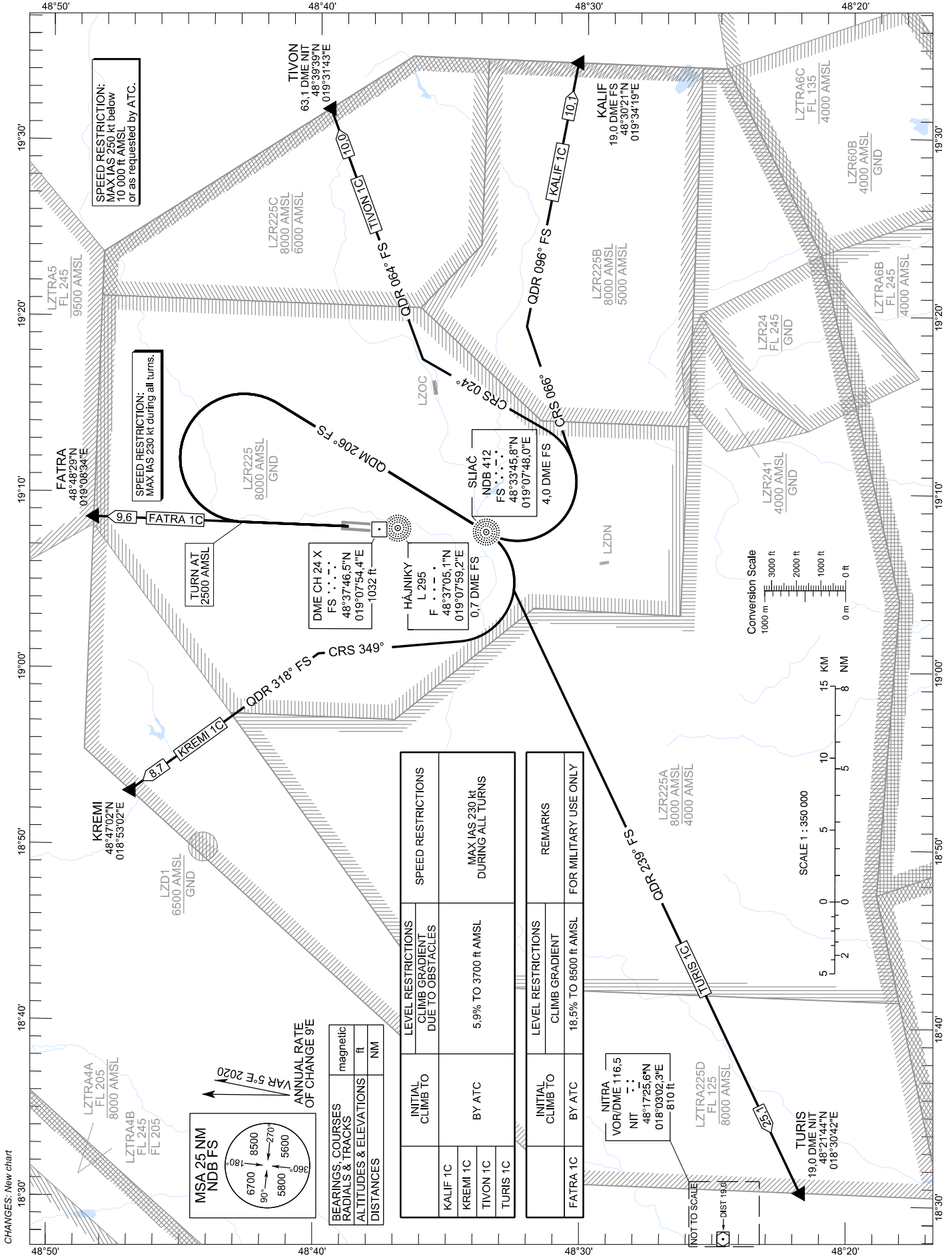
STANDARD DEPARTURE CHART -
INSTRUMENT (SID) - ICAO

TRANSITION ALTITUDE
10 000 ft

SLIAČ RADAR 119,155
SLIAČ TOWER 122,905

SLIAČ (LZSL)
SID RWY 36

ACFT CAT A/B/C/D - VOR/DME SLC U/S



CHANGES: New chart